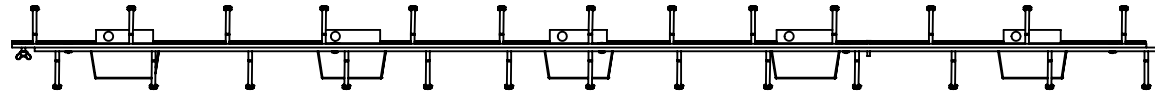
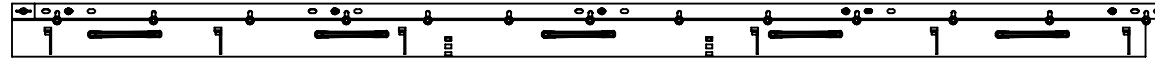


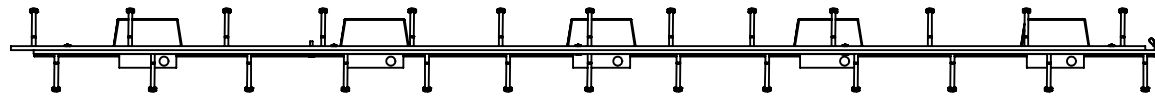
WEB DRAWING - AJ CLASS UNIVERSAL



TOP VIEW



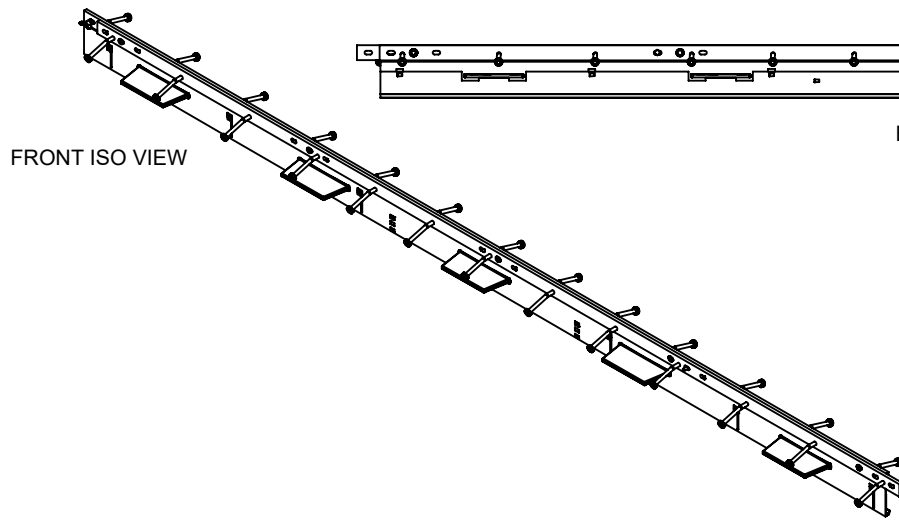
FRONT VIEW



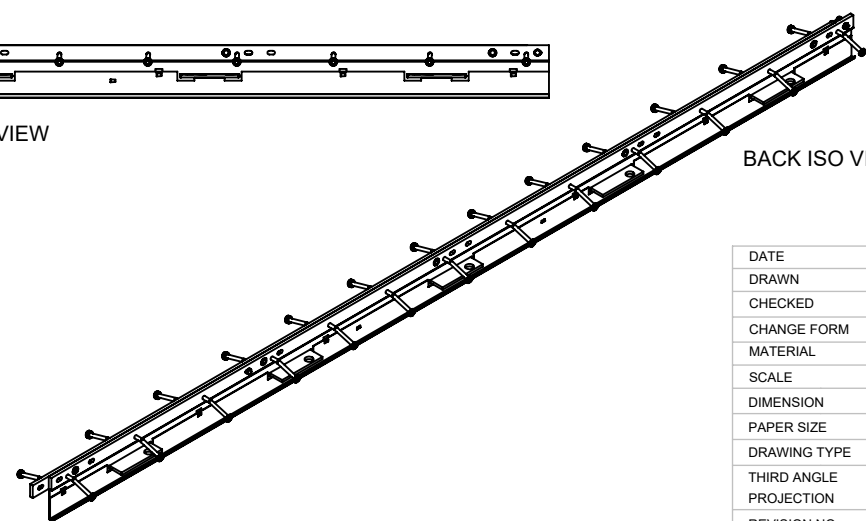
BOTTOM VIEW



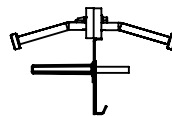
BACK VIEW



FRONT ISO VIEW



BACK ISO VIEW



RIGHT VIEW

DATE	08/05/19	
DRAWN	C.DONOVAN	
CHECKED	-	
CHANGE FORM	-	
MATERIAL	-	
SCALE	-	
DIMENSION	DIMENSIONS IN MILLIMETERS	
PAPER SIZE	A4	
DRAWING TYPE	WEB SITE DRAWING	
THIRD ANGLE PROJECTION		
REVISION NO.	-	

GENERAL TOLERANCES UNLESS OTHERWISE STATED	
LINEAR ±	
1	0.5
1.0	0.1
1.00	0.05
1.000	0.0005
ANGULAR ±	0.5

© copyright reserved. All the information contained in this drawing remains the property of Permaban Ltd and is not to be used for any other purpose or disclosed to third parties without the express prior written consent of Permaban Ltd.

website	www.permaban.com	PAGE 1 - 1
phone no.	+441752 895288	
e-mail	info@permaban.com	

